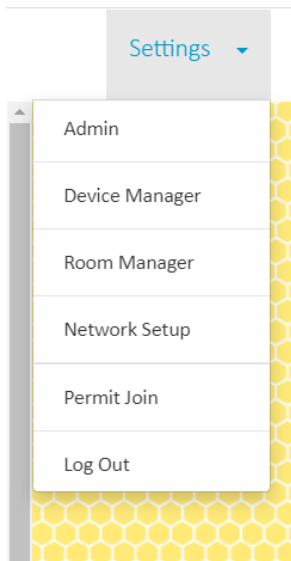
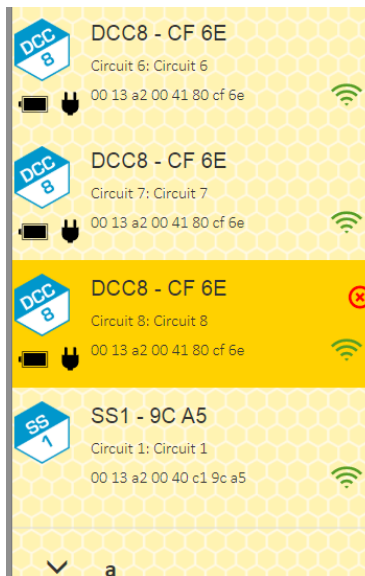


How to kick devices:

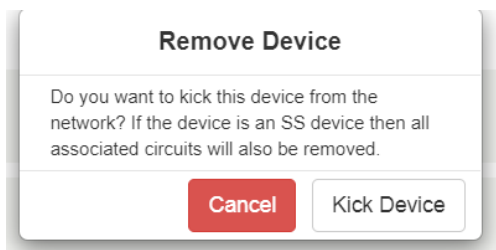
Go to the device manager:



Once in the device manager mouse over the device you want to kick and notice the red “X”



Once you click the “X” you will see this message:



Click “Kick Device” and the device will no longer be able to be found in the device manager. This means that the device was successfully kicked from the hive.

Moving devices around on the Hive:

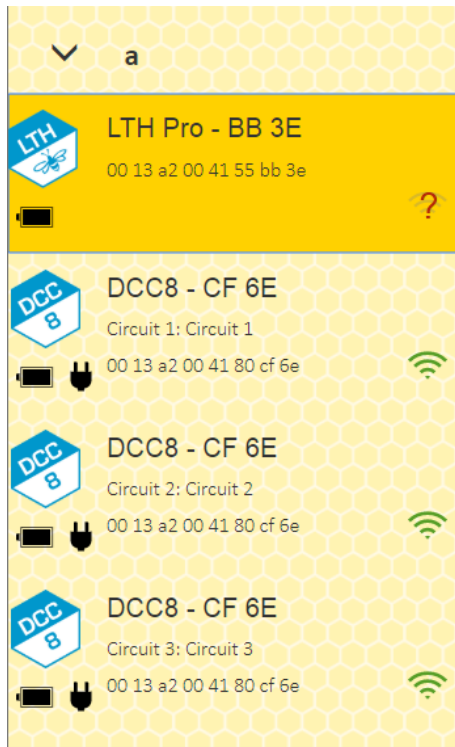
Select the device or the circuit you want to move:

Room	Unassigned ▾
Parent Device Name	DCC8 - CF 6E
Circuit Name	Circuit 1
Radio Address	00 13 a2 00 41 80 cf 6e
Last Update	January 17th, 2:25:46 pm
Appliance Type	set after assigning device to room
Toggle Circuit	<input type="checkbox"/> Off

This screen will then pop up. If you want to move a circuit or device from room to room click the drop-down menu labeled “Room” this will provide you with a list of rooms that are avail on the hive.

Room	Unassigned ▾
Parent Device Name	a
Circuit Name	b
	test

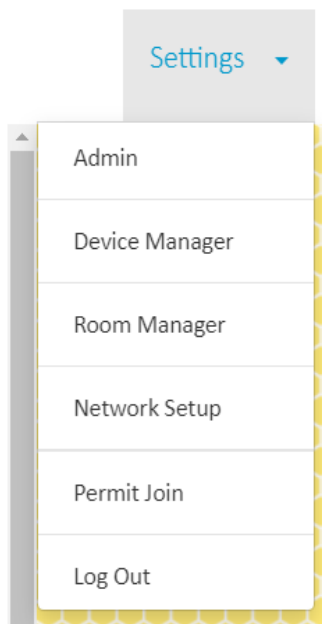
Select the room you want to put the circuit or device into. Notice on the device manager that circuit or device will now be shown under the selected room.



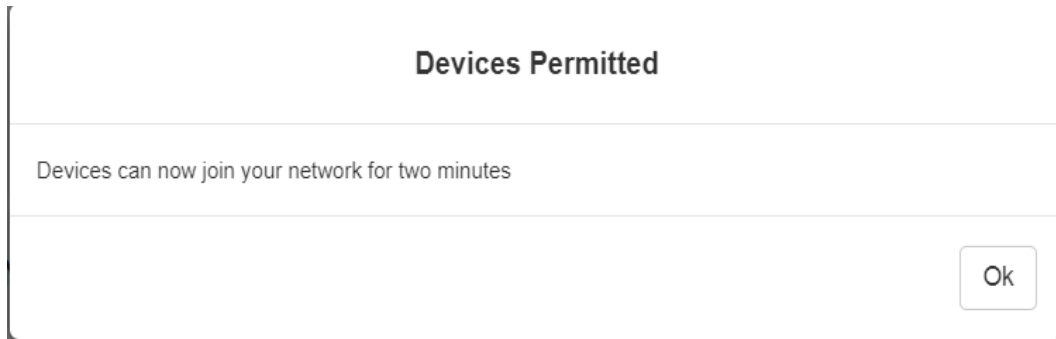
How to connect devices to the Hive:

Power the device on (black toggle switch on sensors pushed up, toggle on Dry Contact controller pushed right)

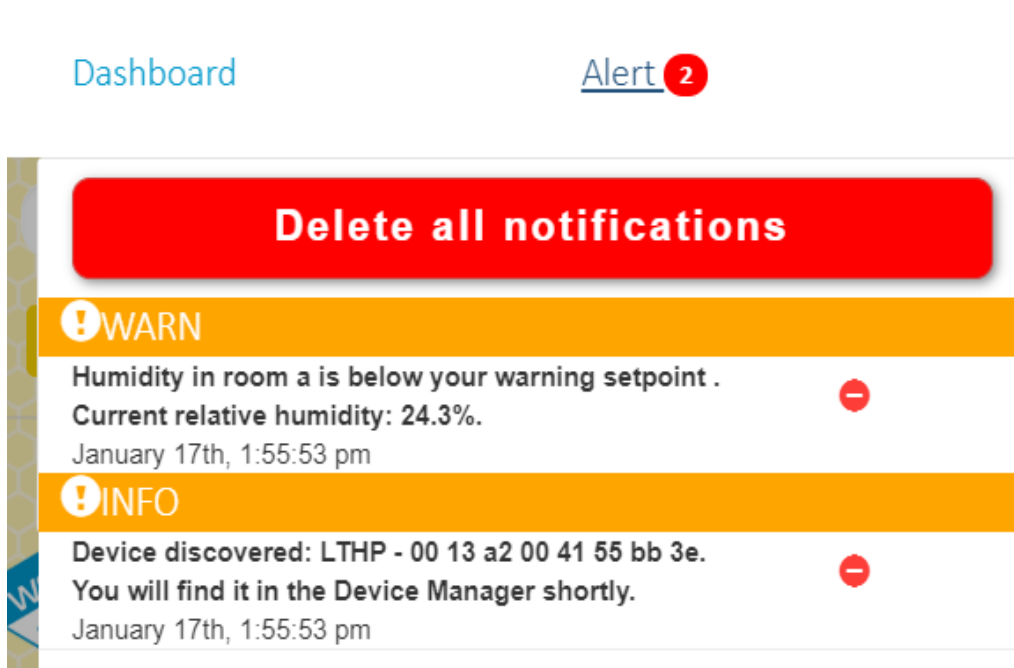
Go to settings and click "Permit Join"



You will then get this message:



You will be alerted when new devices join your hives network:



Go back to "settings" and "Device Manager" and you will find the devices under "unassigned". Follow the steps from above to assign the devices and circuits to the desired room.